

The design of the SOL Health & Lifestyle Centres has been based around the integration of health, aquatic, medical and lifestyle services.

Construction of the SOL Health & Lifestyle Centre Mandurah will be completed by August 2010. This centre will be the second of ten integrated SOL Health facilities constructed within Western Australia, along with the aim of three major sites in Adelaide, Brisbane, Melbourne and Sydney by 2012.

Combining separate commercial operations including a two storey Medical Centre, Restaurant, 90 place Day Care Centre, Kids Activity Centre with community based services such as an Aquatic Centre and high quality Health and Wellness facilities, the SOL Health & Lifestyle Centres will become a major community hub for each region.

Programmes/services will include swim squads, learn to swim classes, school carnivals, education department learn to swim classes, aqua, aerobics, community and sporting club usage, health and wellness members and general usage.

Design

Ground floor

1. Eight lanes x 50 metre indoor pool with grandstand seating for 300.
2. Portable boom - 2 x eight lanes x 25 metre indoor pool.
3. Moveable floor (225 square metres).
4. Leisure pool.
5. Hydrotherapy pool.
6. Day Spa Centre.
7. Restaurant.
8. Main reception and management offices.
9. Commercial tenancies.

Separate commercial facilities;

1. Kids Activity Centre.
2. Day Care Centre.
3. Two story Medical Centre

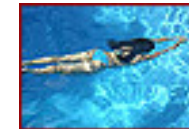
First floor

1. Health and Wellness Centre incorporating 1,770 square metres of gymnasium, group exercise room, health & wellness studio and a spinning / cross training area.
2. Weight Loss Centre.
3. Activity Rooms available for community / commercial hourly hire.

it's all about a
healthy
lifestyle!



Health & Wellness Centre



Aquatic Centre



Hydrotherapy Pool

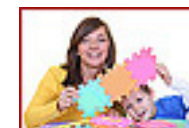
Physiotherapy



Day Spa Centre
Weight Loss Centre



Restaurant / Cafe



Kids Activity Centre



Day Care Centre



Medical Centre



Commercial Tenancies